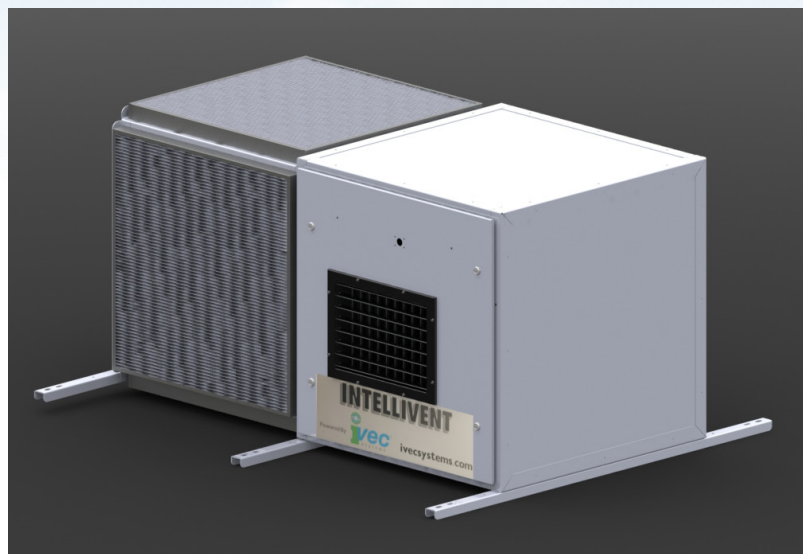




START LIVING WITH LOW COST CLEAN AIR

Intellivent™ GVMC Collectors powered by IVEC® Deliver
Clean Air with *Low Overall Cost of Ownership*



Cost Reduction Guarantee by IVEC®

- Low Up Front Cost per CFM
- Lower Energy Costs by up to 85%
- Significantly Improved Filter Life
- Lower Installation (Plug and Play)
and Maintenance Costs

Advantaged Operating Characteristics

- Modular/ Easily Scalable Design
- Extremely Low Air-to-Cloth Ratio
- Easy In/Out Filters
- Easy Maintenance

Call for a detailed analysis of your application

Protect you and your environment safely while controlling your budget with
Intellivent™ GVMC (General Ventilation Manual Clean Collectors)

Intellivent™ GVMC Collectors



Optimize Your Air Cleaning

The IVEC® intelligent control system helps you **optimize and manage your system automatically**. The system routinely **adjusts power** and **fan speeds** to insure **optimized air cleaning** operation and, with optional IPS Plus, can provide **real-time data** remotely to your computer or mobile device. No more wondering if your air cleaning system is working or working properly, IVEC® will tell you, and **save you money** in the process!

Ever wonder, "Is my dust collector cleaning air properly?"

The Intellivent GVMC automatically adjusts fan speed to optimize filter cleaning capability.

Have you ever calculated wasted energy from suboptimal filter utilization (such as plugged filters)?

The Intellivent GVMC automatically adjusts HP to optimize filter utilization AND with IPS Plus can tell you when to service filters.

Have you ever thought, "We spend a lot of time changing filters?"

Extremely low air-to-cloth ratio provides long filter life, and when it's finally time to change, the Intellivent GVMC requires no tools to change filters.



| Model | GVMC2.5-1 | GVMC2.5-2 | GVMC5-1 | GVMC5-2 |
|--|--------------|---------------|--------------|---------------|
| CFM | 2,500 | | 5,000 | |
| HP | 1 | | 3 | |
| Filter Type | Nano-Fiber* | | Nano-Fiber* | |
| Total Filter Area** (ft²) | 695 | 1,390 | 695 | 1,390 |
| H x W x D | 36 x 72 x 36 | 36 x 108 x 36 | 36 x 72 x 36 | 36 x 108 x 36 |
| Weight (lbs, w/o filters) | 250 | 300 | 250 | 300 |
| Air-to-Cloth Ratio** | 3.6 : 1 | 1.8 : 1 | 7.2 : 1 | 3.6 : 1 |
| * Standard filter, alternative application specific materials available | | | | |
| ** For additional filter area and reduced air-to-cloth ratio, additional "cubes" can be added. | | | | |

Ask about our all inclusive service packages.

Distributed by:



Designed & manufactured by:



IVEC® Systems | 866.670.4832 | www.ivecsystems.com

We invite you to visit our Technology Experience Center for one on one demonstrations.

IVEC and Intellivent are registered trademarks.